

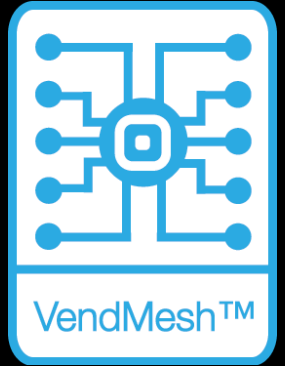
# PPE & Industrial Solutions

by Intelligent Vending

# Company Background



- Intelligent Vending Ltd specialise in the supply of vending related technology and solutions designed to meet applications that would be challenging or impossible for standard equipment.
- To enhance capability and flexibility we have developed our own software and electronics platform that offers the ultimate in control and functionality across a broad spectrum of operational environments.
- Our Internet of Things (IoT) solution has been designed to integrate seamlessly with a range of autonomous or unattended equipment including vending machines, kiosks, and back office systems.
- As well as providing comprehensive control of product delivery, our platform offers sophisticated data feedback and management plus an interactive user interface where communication with users/customers is critical for displaying important product information and health and safety details to staff.
- We work with a large number of high-profile customers spanning industrial, commercial and retail environments.



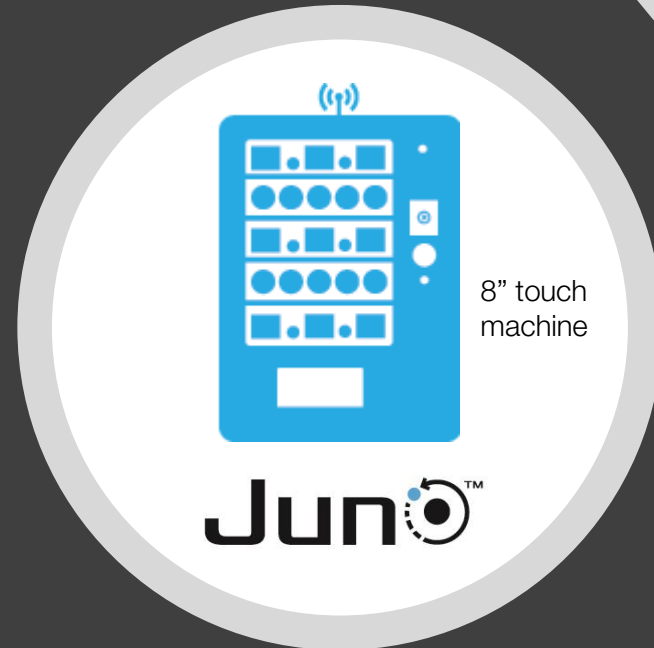
# PPE Vending

- Controlling the use of PPE within an industrial environment can prove to be a challenging task for companies. On the one hand, the potentially high volumes of kit required to meet the needs of a large workforce provide significant incentive to employers to manage stock as efficiently as possible, including reducing wastage. On the other, it is essential that employers do not expose their staff to unnecessary risk or deny access to equipment that provides employees the necessary protection for their day to day working environment.
- The level of health and safety regulation covering such responsibilities means that in a typical workplace most companies 'play safe' by providing open and unsupervised access to items routinely used on the shop floor, e.g. gloves, goggles, ear protection etc. However, such arrangements create precisely the conditions where excessive usage is likely to occur.
- The introduction of a PPE management system using vending equipment and sophisticated control software offers a cost effective and reliable solution to this problem; especially if the level of wastage is high and items needed for a particular work setting are expensive. Our control systems will dramatically reduce or fully eliminate routine waste while providing a detailed audit trail linked to individual users, including a full usage history. This means that every transaction with the machine is tracked 24/7 and reports can either be pre-scheduled or accessed manually on the fly.
- PPE control systems rely on validating a potential user's identity against a staff database containing the names or other information necessary to confirm that the user has authority to access items in the machine.



# PPE Control Systems Explained

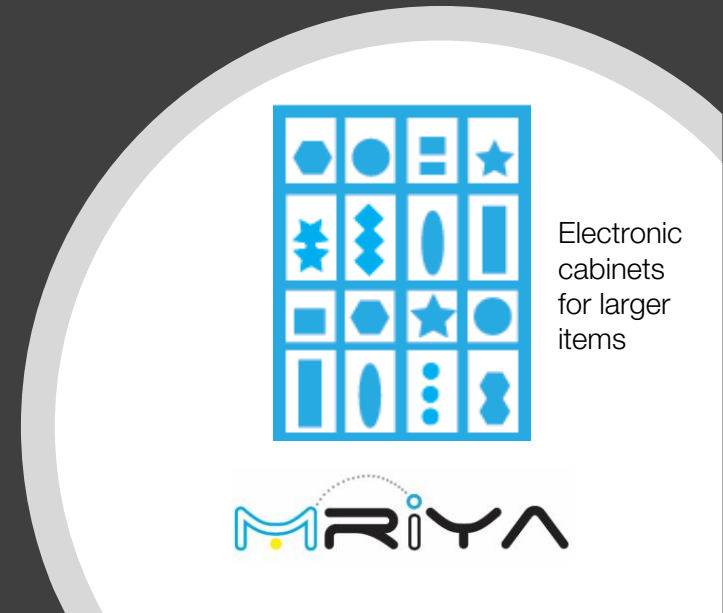
- In most 'off the shelf' systems, a standalone database is used for authentication. To remain up to date the client is required to frequently update this database by adding new joiners or removing leavers from the system. This includes any staff that are no longer authorised to access the machines.
- The problem with this standalone approach is that even the day after the database has been updated it could be out of date. This increases the risk of misuse by individuals, and even more importantly, new staff could be declined access to essential PPE.
- While we can offer entry standalone systems for clients, our preferred approach is to use a fully integrated solution. Integrated solutions authenticate using existing company systems such as ID cards, fobs or biometrics, against a live company database. This approach enables real time capture of information for reporting and avoids the need for a separate database to be managed by the client. This ensures authorisation is always based on current status, and any specific fields of information important to the client are included in the reports (i.e. cost code, department code, job number etc) for review by management or line managers, as required.
- We work closely with our clients' IT teams to deliver integrated solutions, ensuring the most appropriate solution is adopted. The highly flexible nature of our system allows the architecture and authentication method to be tailored specifically to client requirements.



8" touch machine

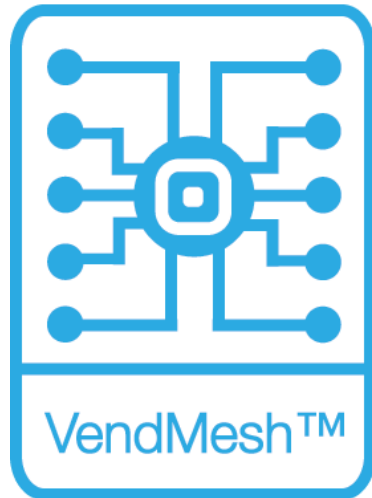


46" touch machine

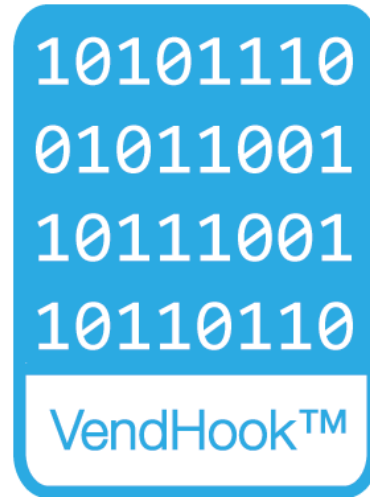


Electronic cabinets for larger items

Our platform, which is used to control the machines, is made up of three core elements which have been developed from the ground up to work seamlessly with each other:



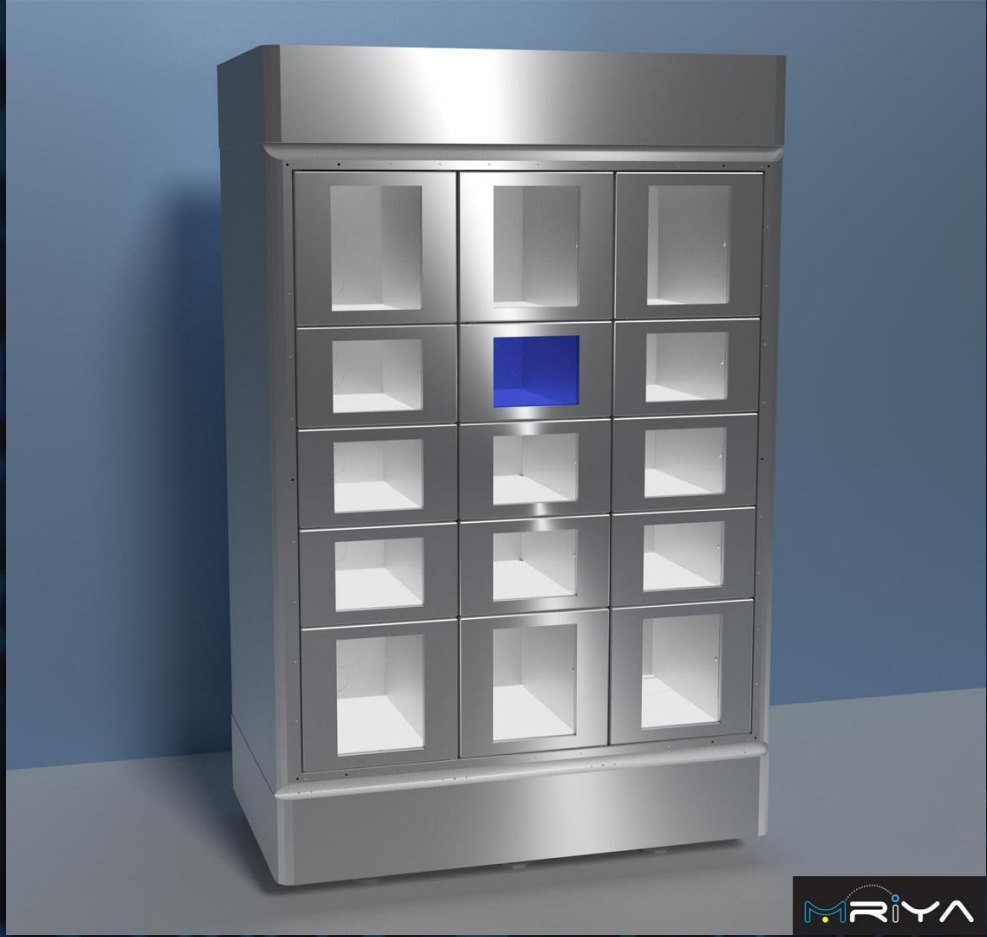
PCB Controller



Software Application



Cloud Portal



# Sirius™

**Juno™**  **MRiYA™** 

Intelligent Vending currently offers two machine hardware solutions available to clients; **Juno™** (entry plus with 8” multi-touch display and lower specification industrial embedded PC), and **Sirius™** (high-end with 46” HD multi-touch display and powerful embedded gaming PC). New turnkey hardware solutions to further expand our product portfolio will be available shortly.

We also supply **MRiYA™** electronic cabinets that can be slaved and controlled from **Juno™** and **Sirius™** machines. These are perfect for larger items not suited for physical dispense from **Juno™** or **Sirius™** machines, they also offer the potential for items to be loaned and returned.

Our rapid development platform also promotes comprehensive and coherent integration with client preferred hardware, software or peripherals and creates new ‘tailored’ solutions with significantly reduced R&D costs and in reduced timescales.

# The Intelligent Vending Solution



- Our control platform is a fully Internet of Things (IoT) based solution, providing two-way communication 24/7 in real time between the machine and our VendHive™ cloud. This enables live transaction reporting and control of a wide variety of machine functions and settings.
- Detailed logging in real time for immediate identification and diagnosis of faults.
- Software issues are usually rectifiable remotely and for mechanical issues an engineer would be alerted to the nature of any mechanical fault before leaving base, avoiding the need for re-visits and saving time and money. The intelligence of the machines reduces downtime, as many issues that would cause out of order scenarios can be adapted to automatically (i.e. such as disabling a failed selection due to a faulty motor etc).
- Our system will identify underusage of equipment as well as potential overuse, a further element of support to employers who need to be made aware if workers are not taking advantage of measures in place to ensure their own safety.
- Our machines include touch screens as standard which enables the display of detailed product information and videos. This could include showing staff how equipment should be used while providing an audit trail that this information has been viewed through user confirmation. The same applies with new H&S procedures, thereby providing evidence for employers that they are meeting their responsibilities.
- Our user interfaces are intuitive and easy to use, both by the users requiring access to items and staff responsible for day to day management of the equipment.
- Even our 'standard' generic interfaces offer a high degree of customisation, while for more demanding or sophisticated applications we can supply a fully bespoke solution. This includes a user journey that is tailored to our clients' specific requirements, displaying all information as appropriate for their organisation.
- Multiple choice questions can also be offered as part of the experience and responses can be recorded against the transaction for back office analysis.



- We do not get involved in the supply of PPE products and consumables as we are aware that existing supply chains for such items are highly important to our clients.
- Consequently, we do not attempt to tie customers into lengthy contracts or exclusive supply agreements. We know that many customers have well established supply arrangements which they do not wish to change.
- We are happy to work with customers' own PPE suppliers to select the most suitable items for vending and restocking processes.

## Working Relationships



# About Us

- Our primary focus is on delivering high quality technology solutions, often delivered as bespoke projects.
- We are always excited to take on new challenges and find new ways to streamline business processes.
- Please let us know about any unique features you require from your solution and we are always pleased to assist.
- We can supply solutions via outright purchase or lease rental.



Intelligent Vending Ltd  
Black Rocks Business Park  
Porter Lane  
Near Wirksworth  
Derbyshire  
DE4 4NQ

[www.intelligentvending.co.uk](http://www.intelligentvending.co.uk)

[sirius@intelligentvending.co.uk](mailto:sirius@intelligentvending.co.uk)  
+44 (0)1629 825555